

Beacon View Primary News

Dear Beacon View Families

Christmas has definitely arrived at Beacon View this week. From the naughty elves, to the start of our Advent Book Calendar, it is clear that the Winter Season is upon us. We can't wait for you to join us for our Winter Fayre (next Friday at 3.15 pm in the main hall), the Nativity, the Carol Service and then for our community Christmas Lunch on Friday 23rd December.

We will have one final newsletter before the end of term, however we hope that we will get to see you before the end of term, especially with parents evenings next week. Please send your reply slip back if you haven't done so already, there are options for both in person meetings or remote appointments using teams or the phone.

We look forward to talking to you about the progress your children are making.

Kind regards

Sally Hodgson

Principal

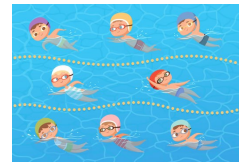
Parking in Marsden Road

Please be considerate of others when parking around the school. There were a couple of issues last week in Marsden Road where adults hadn't parked in spaces and this caused issues for others. Please use the parking spaces along the road and the car park at the bottom of the road if there isn't enough space anywhere else.



Year 3 Swimming

Just a heads up for Year 3 parents to say that Year 3 will be going swimming on Wednesday mornings after Christmas starting on Wednesday 11th January 2022. You will receive a letter very soon to tell you more about this.



Bagels / Magic Breakfast

As you may be aware our school uses Magic Breakfast to provide bagels to the children.



Unfortunately, due to substantial rises to the cost of food and delivery they have had to reduce our bagel provision by 60% to ensure continuity of our supply.

We appreciate that this is difficult news and in a time of increased need and are working with magic breakfast to find a solution. We have cereals if you would like to collect some to take and have at home.

Lunch Time Reminder

Drinks provided in lunch boxes should only include either plain water, milk (semi-skimmed), unsweetened fresh fruit juice, diluted fresh fruit juice, fruit or dairy based smoothies.

Please **do not** bring in:

- Cans - they can pose a safety risk
- Energy drinks
- Electrolyte drinks
- Prime

Please ensure that your child's packed lunch does not include anything containing nuts as some members of the school family have nut allergies.



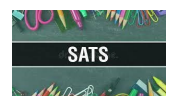
Year 4 Multiplication checks 2023

Attached to the Newsletter is the parent information regarding the Year 4 multiplication checks. You can help your children by supporting them with their work on Times Table Rockstars.



SAT's date changes

Due to the extra bank Holiday the Year 6 SATs will take place from Tuesday 9th May until Friday 12th May.



Attendance Statistics

We aim for all children to be in school every day. Each week a certificate for the best class attendance will be given out.

Congratulations to Valiant with 97.1%



Christmas at Beacon View

Friday 9th December – Winter Fayre 3:15 – 4:00pm (main hall – please bring some pennies)

Monday 12 th December	Tuesday 13 th December	Wednesday 14 th December	Thursday 15 th December	Friday 16 th December
Normal school day	Pre-School Christmas 09:00am	All School – Christmas Jumper Day (with normal uniform) No donation 	Normal school day, including: • Celebration assembly • Class Parties • Fort Champion Winners (Non-uniform day and extra play for fort winners only) 	INSET day No children in school today
	Nativity (Year R,1 and 2) 10:15am 	KS2 Carol Service 10:30am at St Michaels and All Angels Church		
	Nativity (Year R,1 and 2) 2:00pm	All school - Christmas Lunch Children are invited to have a free Christmas lunch (no packed lunches available from kitchen/canteen on this day) 		
	Pre-School Christmas 2:45pm			

Christmas for Everyone Community Lunch – Friday 23rd December 2022. Please see website to book a place